

HYUNDAI

IR Dome IP Camera



5MP IR IP Dome Camera with POE

Model: HY-IP52VP15IR-F/A



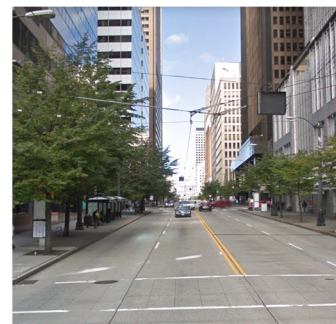
Features:

- 1/3" UHD CMOS sensor
- Max. 5MP resolution 2592 x 1944
- low illumination 0.1Lux
- Day/Night (ICR), AWB, 2D/3D-DNR, IR-CUT
- D-WDR, Motion Detection, Privacy Mask, Mirror, rotate
- RTSP and Onvif 2.6 compatible
- H.265/H.264 dual-stream media server
- Easy-to-use P2P Cloud service
- Multi web browser, PC Client, mobile APP remote access
- Optional customization Lens/Audio/ POE, etc.
- Lightning protection 4000V
- Strong water-proof housing, IP66
- Support POE
- 10pcs SMD IR Leds, IR distance 10- 15 meters
- 3.6 mm fixed lens

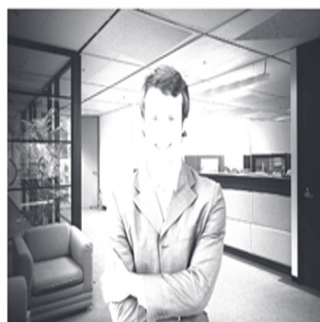
2MP



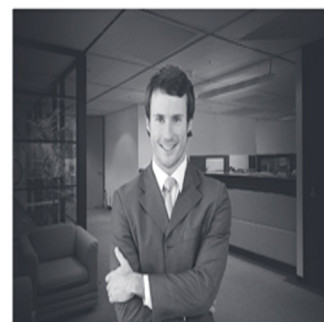
5MP



IR : OFF



IR : ON



Specification:

Model	HY-IP52VP15IR-F/A
Camera	
Image Sensor	1/3" OV4689 CMOS
Effective Pixels	2688(H)×1520 (V)
Electronic Shutter	AUTO, 1/25s ~ 1/100000s
Min. Illumination	0.1Lux@F1.2(AGC ON), 0Lux IR on
Day/Night	Auto/Color/(B/W)/Timing
WDR	Digital WDR
White Balance	Auto
AGC/BLC	Support
DNR	2D/3D DNR
Other	Multi-lines OSD, Motion Detection, Privacy Mask, Mirror, Rotate
Encode	
Embedded Solution	Mstar316DM
Video Standard	H.265/H.264
Video Resolution	Main Stream: 15fps@5MP(2592x1944),20fps@4MP(2592x1520),25fps@3MP/1080P/720P Sub Stream: VGA(640x480)/360P/QVGA@25fps, etc.
Video Bitrates	32Kbps - 8Mbps, VBR/CBR
Audio Standard	G.711-u/G.711-a
IR Led	
IR Led	10pcs SMD LEDs
IR Distance	10-15 M
Lens	
Focal length	3.6 mm Fixed lens
Optional Function	
POE, Audio, etc.	
Network Services	
Protocol	HTTP/RTSP/FTP/NFS/SMTP/DHCP/NTP, etc.
P2P	Yes
Web	IE , Firefox esr.
Media	CMS, Android, IOS
ONVIF	2.6 compatible
General	
Network Port	1-RJ45, 100Mbps, POE optional
Power Supply	12 VDC ± 10%
Power Consumption	< 5 W
Operating Temp.	-30°C-(+60)°C, 10%-90%RH

Deminsion:

